



Marine  
Discovery  
Centre



## *Inspire - Educate - Showcase*

The Marine Discovery Centre aims to provide inspirational discovery learning experiences whilst empowering students to actively protect South Australia's iconic coastal and marine environments. We have the unique opportunity to connect students and our community with South Australia's unique and valuable temperate marine ecosystems. It is our hope that by showcasing our wonderful marine life with a focus on ecological sustainability and Aboriginal culture, we can have positive impacts on your students and the future protection of our coastline.

### OUR CENTRE

We are the only coastal and marine educational facility for school students and the broader community in South Australia. We have been empowering students through inspirational and interactive discovery since 1997.

The Marine Discovery Centre features interactive learning stations covering topics such as sustainable fishing, applying sustainable practices at home, Aboriginal culture and the importance of preserving our unique marine environments.

Our aquariums feature local marine wildlife species and we provide engaging beachside marine trails to complement the Centre's indoor educational facilities.

Book online

[www.marinediscoverycentre.com.au](http://www.marinediscoverycentre.com.au)



08 8115 7402

@ info@marinediscoverycentre.com.au

Cnr Marlborough St & Seaview Rd, Henley Beach SA



## EDUCATION

Our team at the Marine Discovery Centre hope to connect you and your students with the marine world through our interactive excursions and classroom activities. Learning experiences at the Marine Discovery Centre are facilitated by qualified marine scientists and a cultural educator.

The Marine Discovery Centre is closely aligned with ACARA (Australian Curriculum, Assessment and Reporting Authority) particularly the cross-curriculum priorities of Sustainability and Aboriginal and Torres Strait Islander Histories and Cultures.

Before or after your visit to the centre, students can commence or continue their marine journey with our activity sheets, lesson ideas and puzzles. Teachers and educators can download and print these resources to use as part of lesson plans, or simply engage students further with the marine and coastal environment.

[Online Teaching resources](#) | [Educational FAQ's](#) | [Bookings](#)

## MDC EXCURSION SAMPLE ITINERARY

<b>9.45 – 10am</b>	Arrival and welcome
<b>10 – 10.30am</b>	Recess and optional play on the basketball courts (balls supplied, you are welcome to bring more sports equipment). Introduction to the Great Southern Reef and <a href="#">MDC introduction video</a>
<b>10.30am – 12pm</b>	Marine Discovery Trail on Henley Beach (Beachcombing sheets provided)
<b>12 – 12.30pm</b>	Lunch on the decking and free play time on the Nature Play playground
<b>12.30 – 2pm</b>	The class(es) are divided into four groups and spend an allocated time in the aquarium, Karna Education room ( <u>The Wodli</u> ), Beach Discovery room and Catchment to Coast room (Human impact/Sustainability)
<b>2pm</b>	Departure

**Numbers:** 15 to 65 students per session  
(please contact us if your numbers are outside of these parameters to discuss options)

**Cost:** **\$15 per student (plus GST)**  
OSHC/Vacation Care available during school holidays  
Supervising adults free of charge  
Want us to bring the beach to you? **Incursions are available from \$6 per student**

# EXCURSIONS



## BEACH MARINE TRAIL

The marine trail is the focus for the Marine Discovery Centre excursions, as students and adults can become engaged and learn so much more when they get hands-on with the marine and coastal environment.

Depending on the age group and focus of our visiting classes, we can base our marine trail on:

- Beachcombing and discovering the shells, plants and animals the tide has left
- Marine debris and a survey of the types of litter we find along the beach
- Coastal plants and discussion of the importance of the sand dunes

A beachcombing detective sheet is given to each class group, that can then be taken back to the classroom following the excursion for further discovery.

Common objects found on Henley Beach during the Marine Trail include cuttle bones, fibre balls, crabs, a selection of shells, sand cockles, sausage jellies, angel wings, sea sponges and sometimes shark eggs, seahorses, and so much more.

## INSIDE THE MARINE DISCOVERY CENTRE

Following the Beach Marine Trail, the excursion includes a visit into the Marine Discovery Centre which encompasses a multitude of interactive activities appropriate for a wide range of ages. In addition to a full time Marine Scientist and Cultural Educator, our team of volunteers are a wealth of knowledge and come from a wide variety of backgrounds including teaching, marine science, and environmental science just to name a few.

We want to make a difference in educating the young minds of today, so we have developed several interactive models that create a truly captivating, memorable and educational experience for all. **In 2021 and 2022 a whole new range of activities have been introduced to the centre thanks to the support from Green Adelaide.**





## BEACH DISCOVERY ROOM

The Beach Discovery room hosts a range of activities and is our main room that can also host the whole class group.

Interactive models in the Beach Discovery room include but are not limited to:

- Virtual Reality Headsets
- Marine Habitat Model
- Schooling and shoaling fish floor display
- Handheld diving games with 'Discovery Dive'
- Microscopes
- Collection of specimen samples and whale bones
- Gone Fishing model
- Marine parks model
- Good Fishing Practices model
- Beachcombing model
- Size of marine animals activity
- Fish forever model
- Classification sorting box



## HUMAN IMPACT EDUCATION

We have a strong educational component that empowers and educates our visitors with their understanding of sustainability and the part they can play in looking after and preserving our environment.

We have a room dedicated to Catchment to Coast education, with interactive models that have been created for the Marine Discovery Centre to demonstrate how land processes are connected to the marine environment. These models include:

- Climate Change model & Climate change in South Australia touchscreen
- Marine Debris interactive model
- Stormwater and Litter model
- From Catchment to Coast model
- Wetlands Board Game
- Murray River pinball machine
- Light bulb model
- Shower Head model
- Bin sorting game & Litter timeline game





## SOUTH AUSTRALIAN MARINE CREATURES

Our aquarium room features many temperate marine species that can be found on our doorstep here in South Australia. Our Marine tanks give visiting students the chance to get up close and personal with a Port Jackson Shark, Shaw's Cowfish, Porcupinefish, Spiny-Tail Leatherjacket, Globefish, South Australian native Angasi oysters, Big-Bellied Seahorses, and Tasmanian horned blenny.

The tropical Zebra Moray eel allows students to compare temperate and tropical marine species, while fish and yabbies in our freshwater tanks reinforce the need to keep both our rivers and oceans clean.

There are also a couple of interactive models in the Marine room which include but are not limited to:

- The "Sustainable Fishing in SA" Interactive Model
- Fish measuring station and decide whether it is legal size or should be returned to the ocean to grow.
- Sounds of the Ocean models
- Shark matching games
- Food Chain card game.
- The Oyster tank model was acquired from MOD (Museum of Discovery at UniSA)
- The Help our Hoodies model
- Watch the marine life be fed





### KAURNA LEARNING STATION - THE WODLI

In late 2018, The Wodli (Kaurna Learning Station), was developed as an interactive room that highlights the relationship that the Kaurna people have with the Adelaide Plains and the coast. It includes significant, relevant information that reflects the deep relationship Kaurna people have with the land and coast. It features rules for living and Dreaming Story reflections e.g. Tjilbruke, and importantly, increased respect for our native flora and fauna and coastal wildlife will result. We currently employ a cultural educator who shares his perspective passed on from his uncle, and Marine Discovery Centre patron, Karl Telfer.

Students get the opportunity to learn about the culture of the land and the people by looking at Kaurna tools and artefacts and how they were used by our First Nations people. A number of these artefacts have been loaned from the Port Environment Centre which were created by James Taylor.

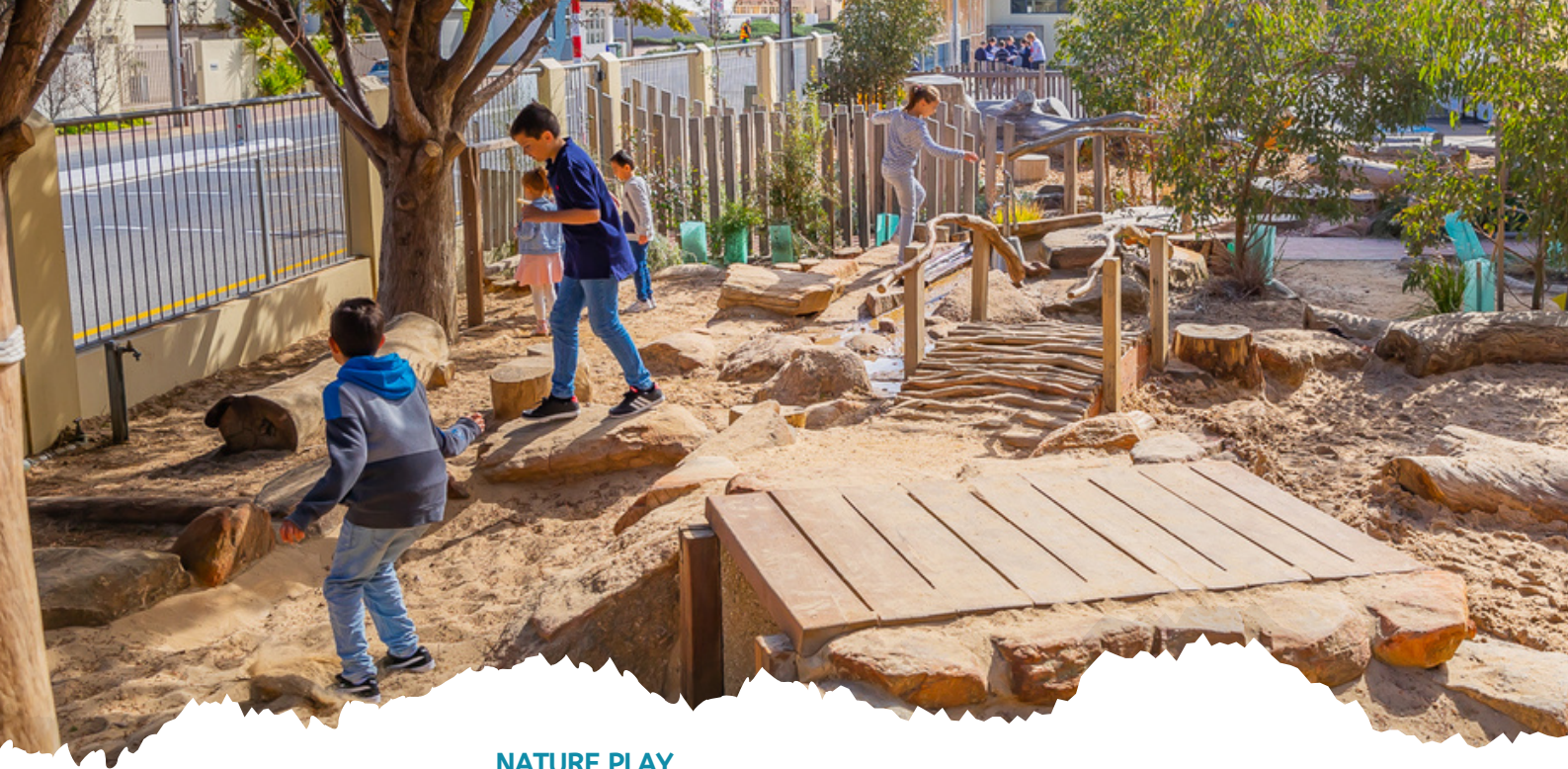
An immersive cultural experience has been added to the space in the form of a digital display: A Yellaka - Old Wisdom-New Ways production in collaboration with Marine Discovery Centre MDC and Monkeystack - a digital display in the Wodli.

### WONGGAYERLO: FOOTPRINTS IN THE SAND

Wonggayerlo: Footprints in the Sand, a family-friendly performance that explores the understanding of our marine and coastal environments through traditional knowledge and western science, performed by Karno Martin and Michael Mills. Set in the 1800s, 'Wonggayerlo' is the story of two men - each from a different culture: Waru - who's always called Australia home, and William - a newly arrived British colonial settler. With performances and songs the language of Waru's and William's cultures (English, Welsh, and Kaurna) - 'Wonggayerlo' will engage, entertain and educate the audience about the differences and similarities between two types of cultures.

**Performed at your school, check out the price in our incursion section.**





## NATURE PLAY

During the lunch break, our visitors have free time on our Nature Play playground.

Nature Play is a part of our culture where students have the opportunity to explore, construct and play with natural objects – logs, beach sand, rocks, water play etc in our natural play area.

Nature Play enables our visitors to use their imagination and creativity, to tinker, play in the mud kitchen, create cubbies and explore water. This fosters a connection with Creation and awareness of how to manage and take care of our natural world and how and when to take measured risks in play.



## FOR TEACHERS AND SUPPORT OFFICERS

A link to age-appropriate education resources will be sent to you upon confirmation of your booking, there are also a number of resources that are available in the centre. An information package including the Beachcombing Detective sheet and other resources is sent home with each class.

We have coffee and tea facilities PLUS a coffee machine with the option to purchase. We additionally have a small kitchen that you are welcome to make use of.

There are no bins on the premises at the Marine Discovery Centre as we are a 'Zero Waste' excursion destination. Please encourage your students to bring nude food. Any rubbish generated will need to be taken home with you at the end of the day.



## Enquiries

For all enquiries, please contact Carmen Bishop at the Marine Discovery Centre on 08 8115 7402 or email [cbishop@marinediscoverycentre.com.au](mailto:cbishop@marinediscoverycentre.com.au)

[Book online](#) | [Risk Assessment](#) | [Education Resources](#) | [Introduction Video](#)





# INCURSIONS

## LET US COME TO YOU

The Marine Discovery Centre can bring an educational and exciting range of activities to you, for your students to experience in their classroom, performing centre or local beach. We love it when you come and see us, but sometimes it's easier and cheaper if we come to you, therefore we have developed a few programs to suit a range of ages and interests.

### Option 1: MDC experience in your class/school

Our team can bring the beach and a variety of incursion programs to schools & Vacation Care Groups

Programs available include:

1. Marine Creatures Great and Small
2. Ocean Warriors - Protecting our Environment
3. Survival of the Sea
4. Curious Classification

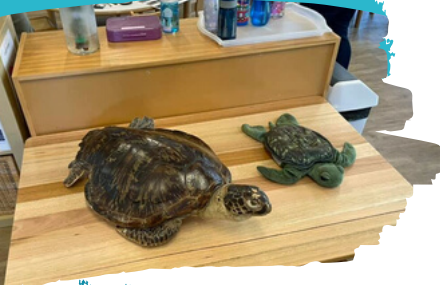
Visits can include activities focused on:

- Aboriginal Artefacts - history
- Virtual Reality Headsets
- Discovery Dive in South Australian waters
- Marine Food Chains
- Marine Litter
- Ocean Currents
- Recycled Art
- Creature Features
- Sustainable Fishing Practices
- Beachcombing at your local beach or exploring provided sand boxes school

These learning experiences allow students to discover the wonders of our local marine environment through interactive and hands-on activities linked to ACARA.

**Session Time:** 45 minutes (multiple classes) or 90 minutes

**Cost:** \$7+gst (multiple classes) or \$10+gst per student – minimum cost \$300+gst



08 8115 7402



info@marinediscoverycentre.com.au



marinediscoverycentre.com.au





## LET US COME TO YOU - CONTINUED

### Option 2: Down the Drain by HeapsGood Productions

Down the Drain is a performance that explores the journey of water from catchment to coast. It explores the difference between water that is processed as sewerage, and water that goes through the stormwater system, and often out to sea. Why do we have such a system here in Adelaide? And what can we do to ensure that the only thing that goes down the stormwater drain, is rain!

#### [Teacher resources](#)

**Performance and Q&A session:** approximately 1 hour & 15 mins in duration.

**Cost:** \$6.60 per child with 200 – 300 students

\$7.70 per child with 150 – 200 students

**Minimum charge:** \$1,155



### Option 3: Wonggayerlo: Footprints in the Sand

Wonggayerlo: Footprints in the Sand, a family-friendly performance that explores the understanding of our marine and coastal environments through traditional knowledge and western science, performed by Karno Martin and Michael Mills. Set in the 1800s, 'Wonggayerlo' is the story of two men - each from a different culture: Waru - who's always called Australia home and William - a newly arrived British colonial settler. With performances and songs in the language of Waru's and William's cultures (English, Welsh, and Kaurna) - 'Wonggayerlo' will engage, entertain and educate the audience about the differences and similarities of two types of cultures.

**Performance and Q&A session:** 90 minutes

**Cost:** From \$6.60 per student

**Minimum charge:** \$1,200



### Option 4: Aboriginal Cultural workshops

With Cultural Educator, Karno Martin. Workshops are tailor-made to suit your year level

**Cost:** From \$7.70 per student



**Bookings & inquiries:** 8115 7402 or email: [info@marinediscoverycentre.com.au](mailto:info@marinediscoverycentre.com.au)



08 8115 7402



[info@marinediscoverycentre.com.au](mailto:info@marinediscoverycentre.com.au)



[marinediscoverycentre.com.au](http://marinediscoverycentre.com.au)